

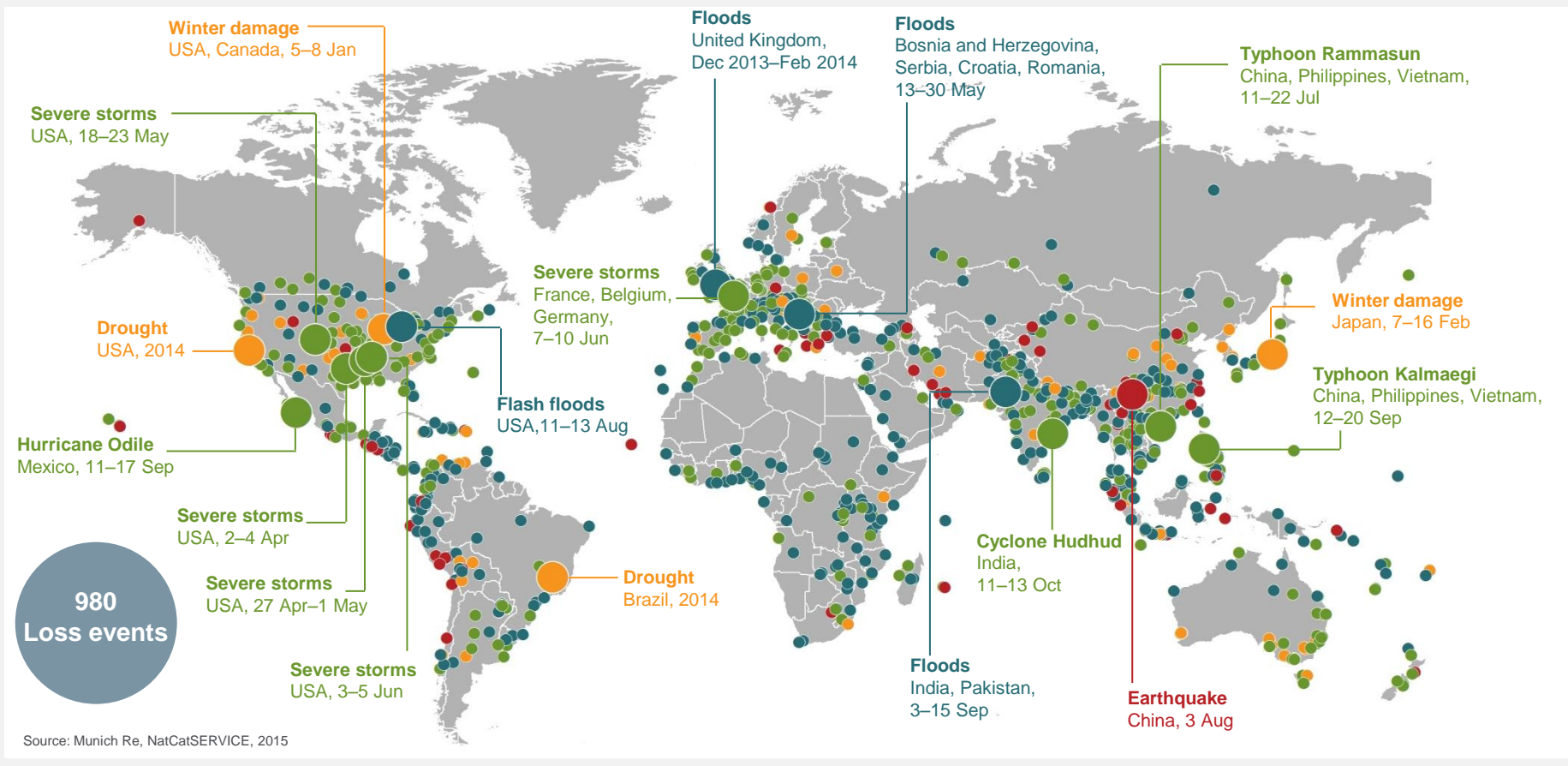


NatCatSERVICE
Loss events worldwide 1980 – 2014

January 2015

Loss events worldwide 2014

Geographical overview



○ **Loss events**

○ **Selection of catastrophes**
Overall losses ≥ US\$ 1,500m

● **Geophysical events**
(Earthquake, tsunami, volcanic activity)

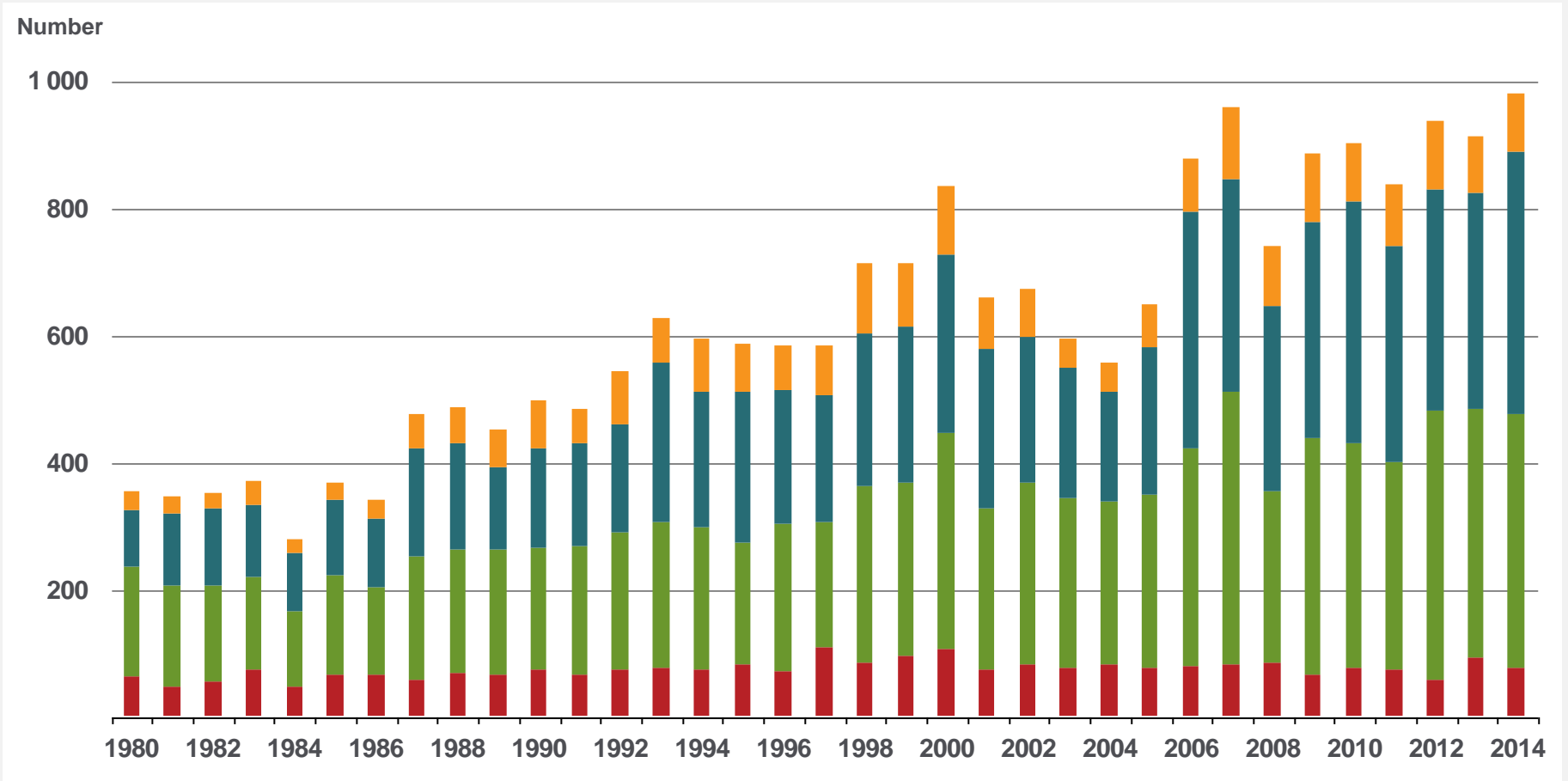
● **Meteorological events**
(Tropical storm, extratropical storm, convective storm, local storm)

● **Hydrological events**
(Flood, mass movement)

● **Climatological events**
(Extreme temperature, drought, wildfire)

Loss events worldwide 1980 – 2014

Number of events



Geophysical events
(Earthquake, tsunami,
volcanic activity)

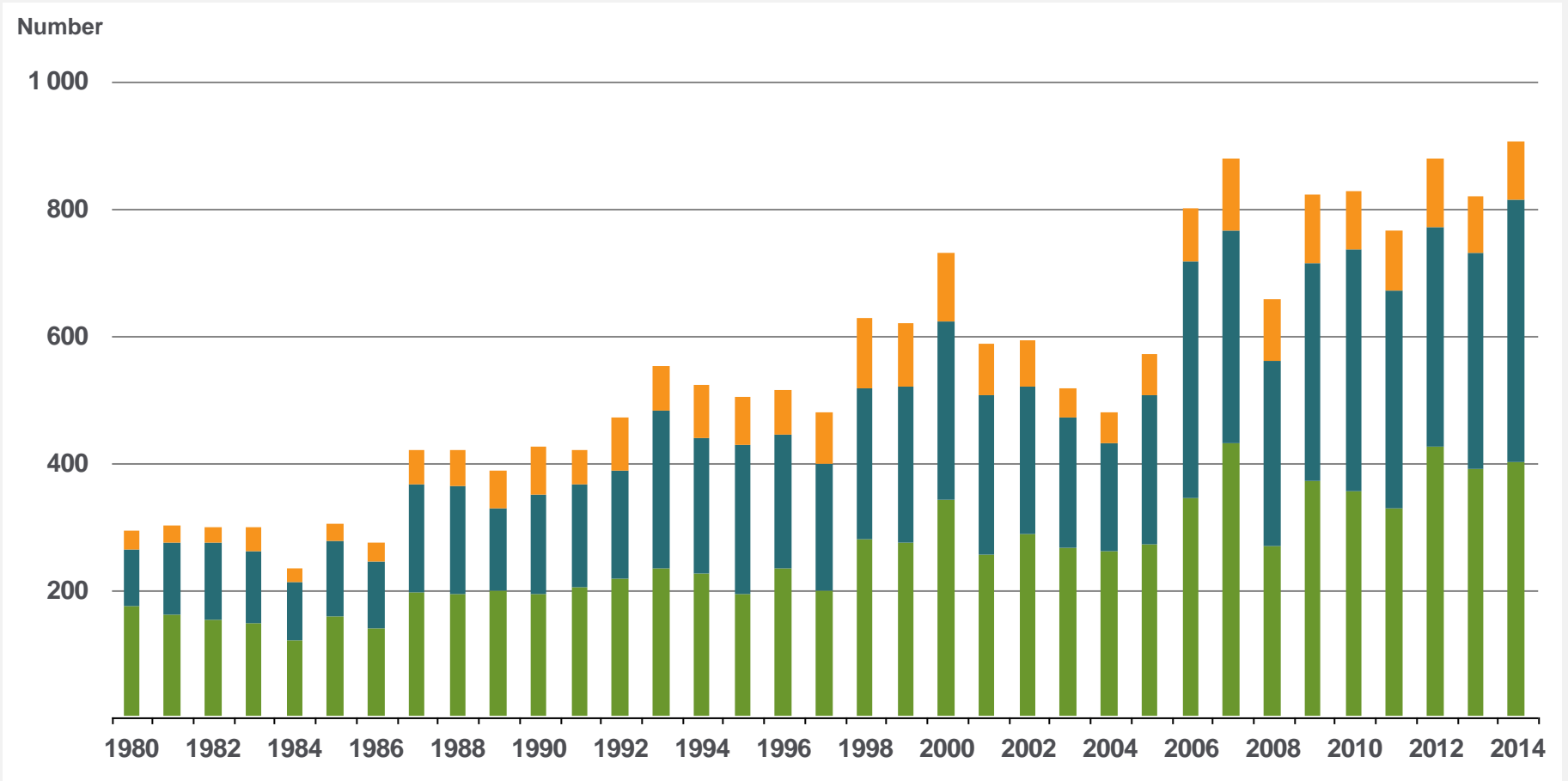
Meteorological events
(Tropical storm, extratropical
storm, convective storm,
local storm)

Hydrological events
(Flood, mass
movement)

Climatological events
(Extreme temperature,
drought, forest fire)

Loss events worldwide 1980 – 2014

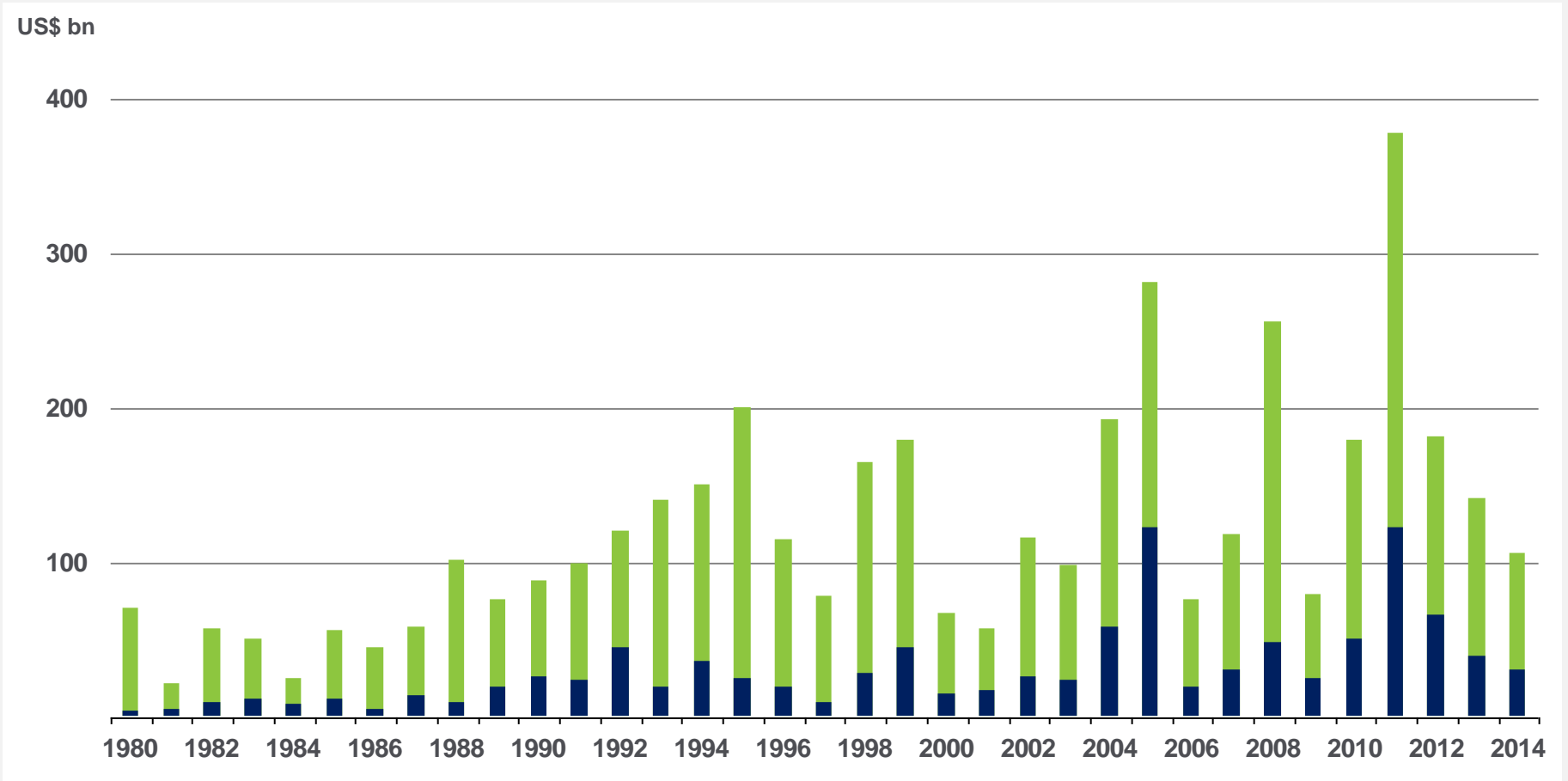
Number of events



- **Meteorological events**
 (Tropical storm, extratropical storm, convective storm, local storm)
- **Hydrological events**
 (Flood, mass movement)
- **Climatological events**
 (Extreme temperature, drought, forest fire)

Loss events worldwide 1980 – 2014

Overall and insured losses



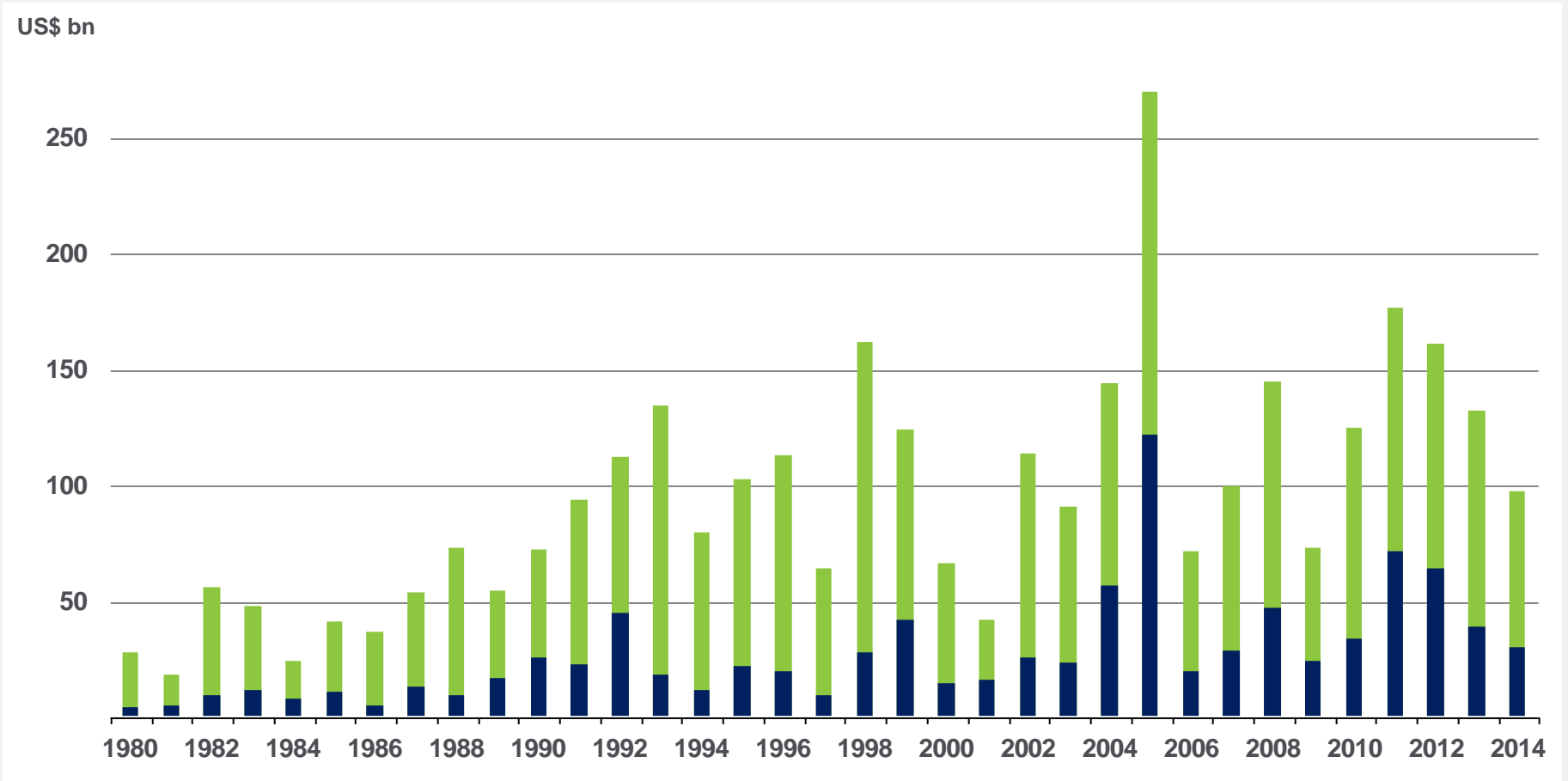
 Overall losses (in 2014 values)*

 Insured losses (in 2014 values)*

*Losses adjusted to inflation based on country CPI

Weather-related loss events worldwide 1980 – 2014

Overall and insured losses



 Overall losses (in 2014 values)*

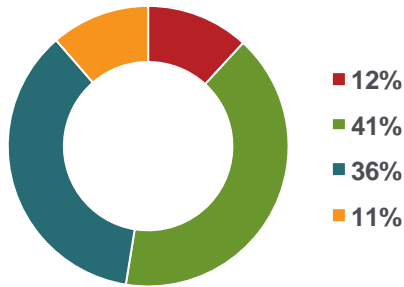
 Insured losses (in 2014 values)*

*Losses adjusted to inflation based on country CPI

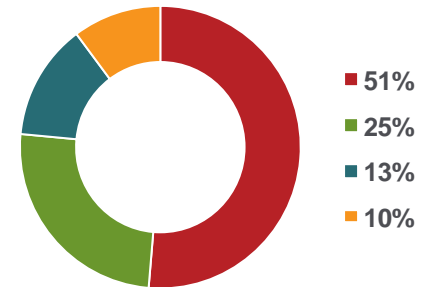
Loss events worldwide 1980 – 2014

Percentage distribution

21,700 Loss events

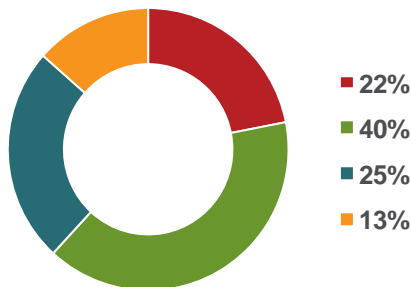


1,740,000 Fatalities*



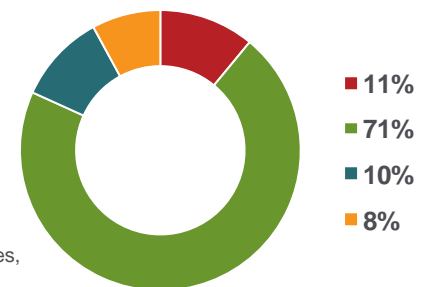
*Number of fatalities without famine

Overall losses** US\$ 4,200bn



**Losses in 2014 values, adjusted to inflation based on country CPI

Insured losses** US\$ 1,100bn



**Losses in 2014 values, adjusted to inflation based on country CPI

■ Geophysical events
(Earthquake, tsunami, volcanic activity)

■ Meteorological events
(Tropical storm, extratropical storm, convective storm, local storm)

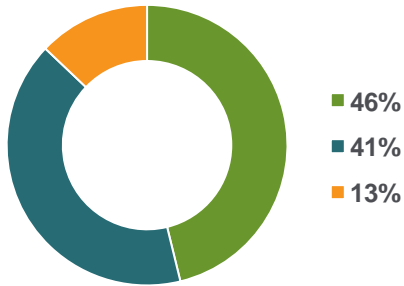
■ Hydrological events
(Flood, mass movement)

■ Climatological events
(Extreme temperature, drought, forest fire)

Weather-related loss events worldwide 1980 – 2014

Percentage distribution

19,200 Loss events

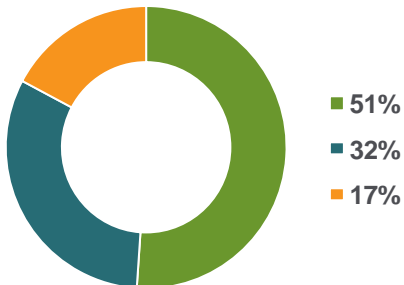


850,000 Fatalities*



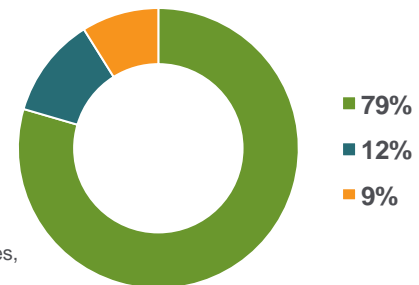
*Number of fatalities without famine

Overall losses** US\$ 3,300bn



**Losses in 2014 values, adjusted to inflation based on country CPI

Insured losses** US\$ 940bn



**Losses in 2014 values, adjusted to inflation based on country CPI

Meteorological events
(Tropical storm, extratropical storm, convective storm, local storm)

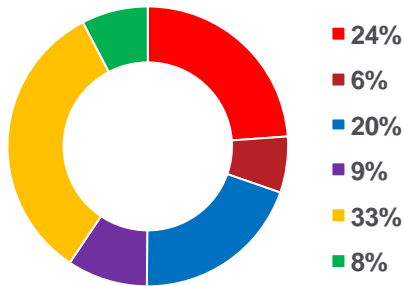
Hydrological events
(Flood, mass movement)

Climatological events
(Extreme temperature, drought, forest fire)

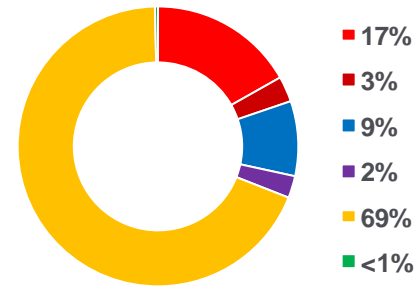
Loss events worldwide 1980 – 2014

Percentage distribution – ordered by continents

21,700 Loss events

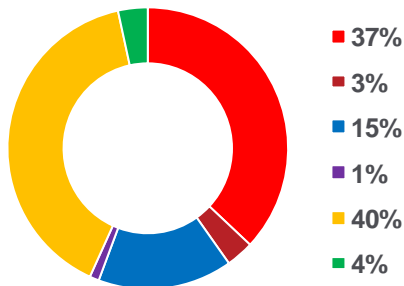


1,740,000 Fatalities*



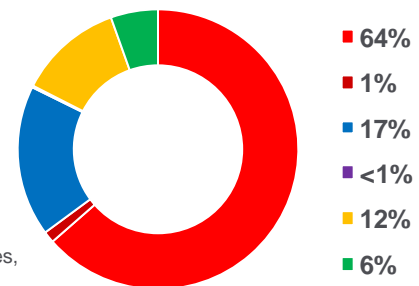
*Number of fatalities without famine.

Overall losses** US\$ 4,200bn



**Losses in 2014 values, adjusted to inflation based on country CPI

Insured losses** US\$ 1,100bn



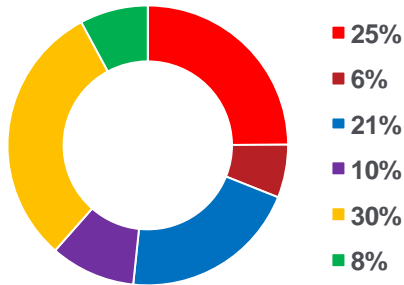
**Losses in 2014 values, adjusted to inflation based on country CPI



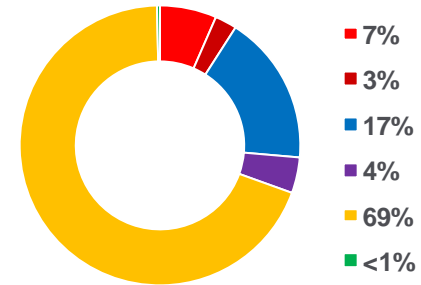
Weather-related loss events worldwide 1980 – 2014

Percentage distribution – ordered by continents

19,200 Loss events

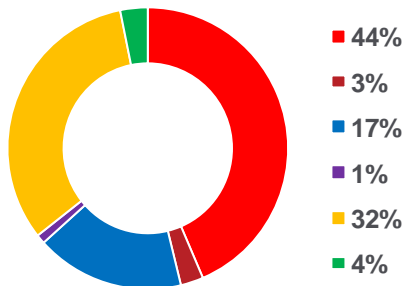


850,000 Fatalities*



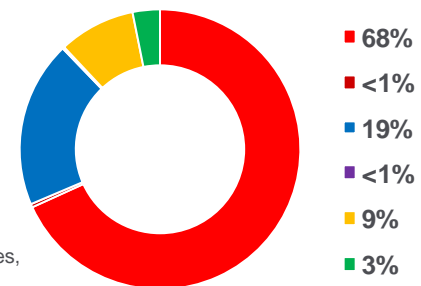
*Number of fatalities without famine.

Overall losses** US\$ 3,300bn



**Losses in 2014 values, adjusted to inflation based on country CPI

Insured losses** US\$ 940bn



**Losses in 2014 values, adjusted to inflation based on country CPI

