



Munich Re Specialty Insurance

E&S Financial Lines Claims Overview **A claims team like no other**



We have what it takes to handle claims professionally, efficiently, and expertly.

The Munich Re Specialty Insurance (MRSI) E&S Financial Lines Claims team has decades of experience financial lines and understands your business innately. Our team includes licensed attorneys with trial experience, and we are experts in claims strategy and litigation management. Most importantly, we handle your claims with the utmost diligence and professionalism.

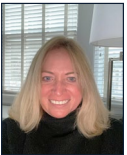
Your Financial Lines team



Mary Beth McClellan
Chief Claims Officer
MRSI
mmclellan@munichre.com



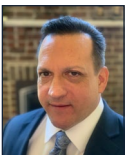
Bill Quackenboss
Claims Practice Lead
wquackenboss@munichre.com



Melanie Brown
Head of Complex and Specialty Claims
MRSI
mbrown5@munichre.com



Natalie Jean-Felix
Fin/Pro Claims Manager
njean-felix@munichre.com



Ed Kozel
Claims Practice Lead
ekozel@munichre.com

Mary Beth McClellan is MRSI's Chief Claims Officer. Mary Beth has a wealth of knowledge in insurance, claims, and litigation management spanning North America's P&C markets. Prior to joining MRSI, she was Practice Leader for the Americas at AXA XL for Excess & Surplus, Global Programs, U.S. Programs, Environmental P&C, Canada, and Allied. Mary Beth draws on her background as a trial attorney to lead with strategic vision and influence with a technical emphasis and pragmatic approach to achieve the most optimal claim resolutions. She is barred where she spent her early days representing insureds and insurers —New York, New Jersey, Pennsylvania, and several federal courts.

Melanie Brown is MRSI's Head of Complex Claims and Specialty, with over 20 years of experience in casualty and specialty lines. Prior to joining MRSI, Melanie was the Director of Professional Liability at Markel, where she oversaw claims spanning Architects & Engineers, Construction Defect, Lawyers, Agents & Brokers, Directors & Officers, Miscellaneous E&O, and Medical Malpractice/Healthcare nationwide. She also managed General Liability, Products Liability, and Environmental claims. Melanie also practiced law, defending clients in commercial, professional liability, pharmaceutical, and products liability litigation. Melanie graduated from the University of Virginia and received her Juris Doctor from Washington & Lee University. She is admitted in Illinois and numerous federal courts.

Ed Kozel is MRSI's Claims Practice Lead. Ed has over 25 years of experience in advising on high exposure matters and trials for specialty and casualty claims. Prior to joining MRSI, Ed served as Managing Trial Attorney with CNA Financial Corporation, where he provided strategic oversight on complex claims, including all professional lines. Before CNA, Ed was a partner at an international insurance defense law firm located in Chicago, representing commercial insurers and insureds in first- and third-party matters. He also gained valuable experience as plaintiff's attorney early on in his career. Ed has a wealth of litigation experience, trying over 200 cases, which includes serving as the first chair in many high severity jury trials. His admissions have included Illinois, Wisconsin, Missouri, Minnesota, and Indiana.

Bill Quackenboss is MRSI's Claims Practice Lead. Bill has nearly 20 years of experience in advising on coverage matters and claims-handling practices. Prior to joining MRSI, Bill served as an Associate General Counsel at Markel Insurance, where he provided guidance on coverage and complex claims to multiple lines of business in casualty and specialty lines. Before Markel, Bill was a partner in private practice, where he represented commercial insurers in litigated coverage disputes. Bill also previously served as an Assistant General Counsel at Swiss Re. He is admitted to practice in New York and New Jersey, as well as in several federal courts.

Natalie Jean-Felix is MRSI's Claims Manager for Financial and Professional Lines. She has vast experience overseeing claims in D&O, EPL, E&O (including A&E, Agents and Brokers, Lawyers, and Tech), Malpractice, Cyber, Crime, products, and GL lines, with domestic and international insureds, including public entities. Having served in various capacities at a number of insurance carriers, including as Vice President of Professional Liability Claims, Natalie has over twenty years' experience in the insurance industry. She graduated from Sarah Lawrence College and Hofstra University School of Law.

Munich Re Specialty Insurance. Solutions for today and tomorrow.

Munich Re Specialty Insurance (MRSI) is a description for the insurance business operations of affiliated companies in the Munich Re Group that share a common directive to offer and deliver specialty property and casualty insurance products and services in North America. For more information on MRSI, including licensing, regulatory-required, and other information on the operating companies, please [click here](#).