



## Next-generation claim reporting is here – introducing the Remote Inspection video tool

### Settle claims in a fraction of the time – completely remotely

What if you could inspect, report and settle a claim in real time? It's possible with the Remote Inspection video tool – a simple-to-use technology for both policyholders and insurers. A smart phone and simple-to-install software is all that is needed to get started. The benefits? Cost, time, and resource savings for insurers and an improved experience for policyholders.

### Reporting and settling claims have never been this easy

Imagine a policyholder calling in a claim, whether it be property or automotive related. Within minutes, the policyholder is connected to an app on their smart phone with the help of a claims adjuster. The app lets the policyholder record damage on the spot, enables a claims adjuster to view the video or photo(s)–as well as capture inspection report notes–and even fully settle a claim the same day in many cases.

### The Remote Inspection tool's multiple uses

#### Property

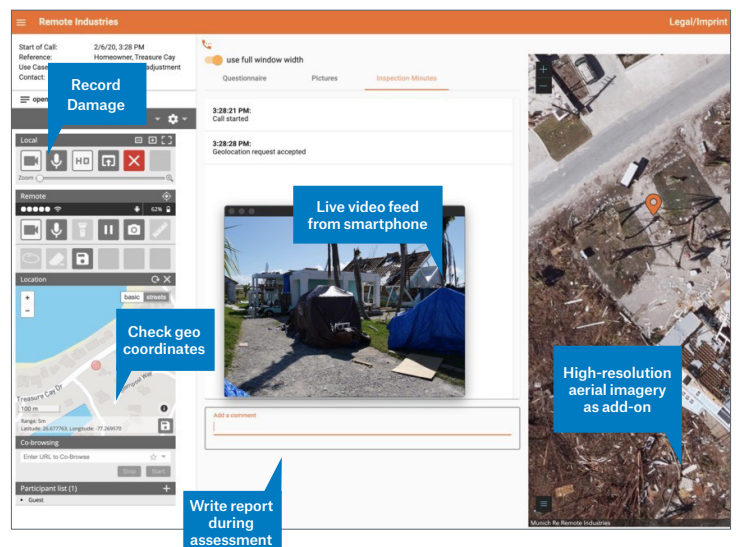
- Instantly see property damage policyholder sees.
- Facilitate agreement on scope between contractor and insurer.

#### Auto

- Get in-the-moment, accurate auto claim information.

#### Renewals

- Speed home inspections for a policy renewal.



## How does it work? (Simply!)

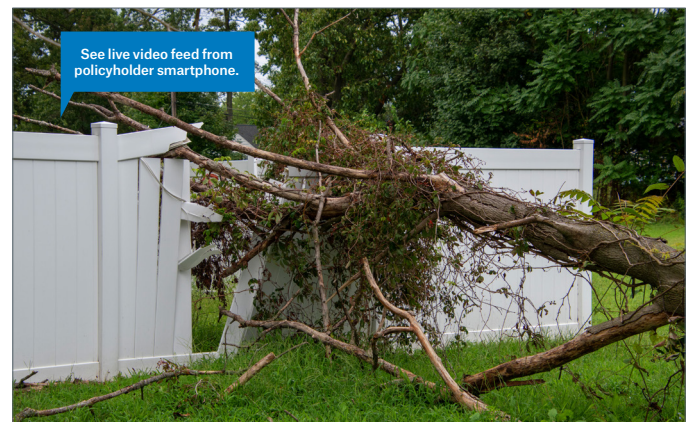
Whether for a property or auto claim, the Remote Inspection video tool greatly streamlines the claims process, providing benefits to insurers and policyholders.

<b>Policyholder</b>	<b>Claims adjuster/inspector</b>
Calls in a claim	Helps policyholder download app on smartphone
Uses phone to video and/or take pictures of damage	Views live video feed, records damage Obtains location of client (geo coordinates) Writes report – all from one dashboard
Receives confirmation of inspection in minutes	Summary report of the video call is sent to adjuster.

## Multiple uses – Multiple benefits

The Remote Inspection video tool can be used to facilitate daily property claims (broken windows, minor storm damage). On catastrophe claims, minor damages can be assessed and reported virtually instantly. For renewals, underwriters and sales representatives can remotely inspect properties (check home size, roof condition and more).

Motor vehicle claims are more accurately and immediately captured and reported, repair cost estimates and/or suspicious claims can be investigated more effectively.



The Remote Inspection video tool can help save field adjusting resources for the complex losses where their skills are truly needed, saving insurers time and money. Policyholders enjoy the convenience of not having to wait for an appointment with an adjuster, and benefit from expedited claims settlements.

**Let's talk about the possibilities. Contact us for more information at [remote-industries@munichre.com](mailto:remote-industries@munichre.com).**

The material presented here reflects projections based on assumptions and forecasts, and is intended for information purposes only. It is not intended to be legal, underwriting, financial or any other type of professional advice and the recipient should consult with its own counsel or other advisors to verify the accuracy and completeness of any information used and to determine its applicability to the recipient's particular circumstances. The Remote Industries product and service is offered by Münchener Rückversicherungs-Gesellschaft Aktiengesellschaft ("Munich Re"). Remote Industries is provided by MR Service GmbH which is a wholly owned subsidiary of Munich Re. Neither Munich Re nor Munich Reinsurance America, Inc. (collectively, the "Companies"), or any of the Companies' respective affiliates, makes any warranty, representation or guarantee, expressed or implied, in this material regarding the product or service and the suitability of the product and service for the recipients' particular purpose. The Companies disclaim any and all liability whatsoever resulting from use of or reliance upon this material.

Munich Re is a reinsurance company organized under the laws of Germany. In some countries, including in the United States, Munich Re holds the status of an unauthorized reinsurer. Policies are underwritten by Munich Re or its affiliated insurance and reinsurance subsidiaries. Certain coverages are not available in all jurisdictions.

© Copyright 2020.  
All rights reserved.  
Munich Reinsurance America, Inc.

Printed March 2020