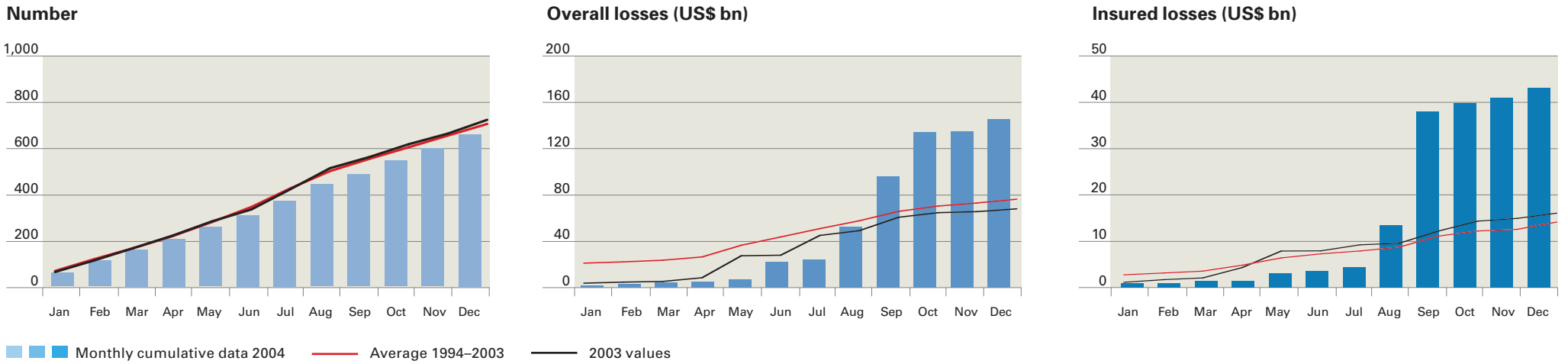
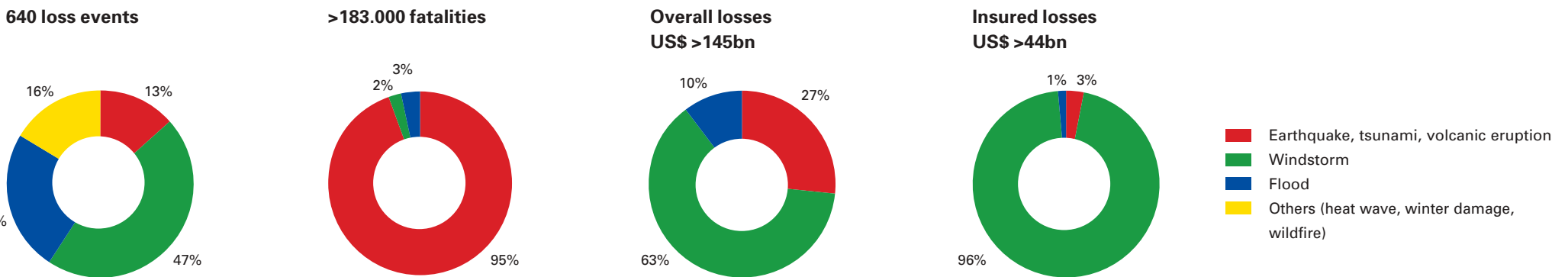


Natural catastrophes in 2004

Development (compared with the monthly average 1994–2003 and the previous year 2003)



Percentage distribution worldwide



1 USA, Illinois: Tornadoes (May)



2 USA, Florida: Hurricane Jeanne (September)

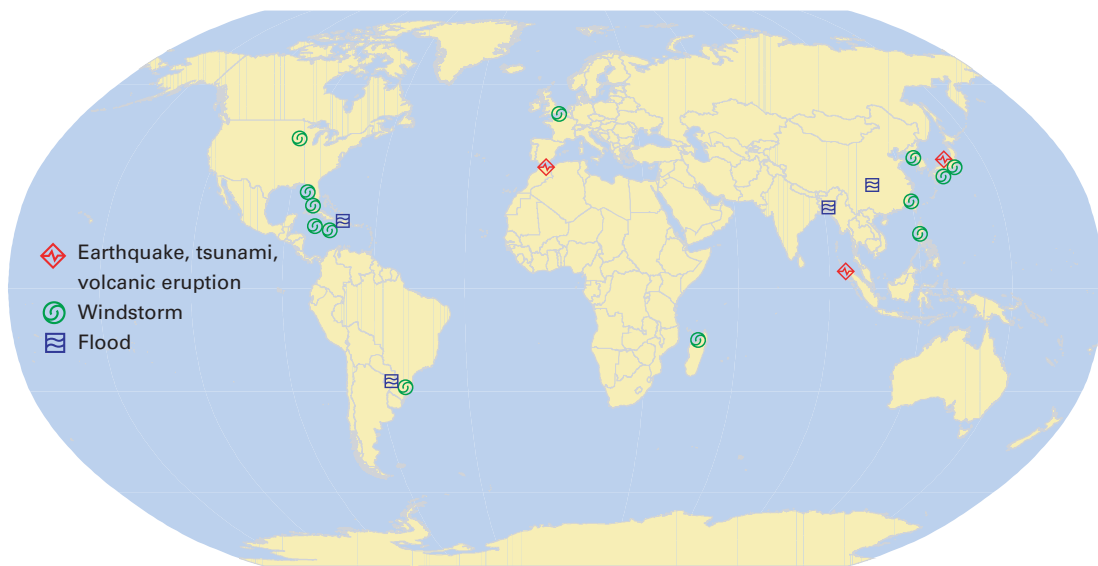


3 Japan: Earthquake (October)



4 Indonesia: Tsunami (December)

Some significant natural catastrophes in 2004



| Date | Country/Region | Loss event | Fatalities | Overall losses US\$ m | Insured losses US\$ m |
|-----------|---------------------------|---------------------|------------|-----------------------|-----------------------|
| 24.2 | Morocco: N | Earthquake | 640 | 400 | |
| 5–8.3 | South Korea | Snowstorm | | 570 | |
| 6–7.3 | Madagascar | Cyclone Gafilo | 237 | | |
| 27–29.3 | Brazil | Hurricane Catarina | 4 | 350 | 3 |
| 21–27.5 | USA: IA, IL, IN, KS, KY | Tornadoes, hail | 4 | 1,100 | 800 |
| 24–26.5 | Haiti, Dominican Republic | Floods | 2,000 | | |
| June–Sept | China | Floods, landslides | 1,000 | 7,800 | |
| June–Aug | Bangladesh, India, Nepal | Floods | 2,200 | 5,000 | |
| 11–14.8 | Caribbean. USA | Hurricane Charley | 36 | 18,000 | 8,000 |
| 12–15.8 | Taiwan, China | Typhoon Rananim | 165 | 2,200 | |
| 1–9.9 | Caribbean. USA | Hurricane Frances | 37 | 12,000 | 6,000 |
| 6–8.9 | Japan, South Korea | Typhoon Songda | 41 | 9,000 | 4,700 |
| 7–21.9 | Caribbean. USA | Hurricane Ivan | 125 | 23,000 | 11,500 |
| 15–29.9 | Caribbean. USA | Hurricane Jeanne | 2,000 | 9,000 | 5,000 |
| 19–21.10 | Japan | Typhoon Tokage | 80 | 2,300 | 1,300 |
| 23.10 | Japan: Niigata prefecture | Earthquake | 39 | 28,000 | 450 |
| Nov–Dec | Philippines | Typhoons, floods | 1,060 | 100 | |
| 6–18.12 | Argentina | Floods | | | |
| 17.12 | France, Germany | Winter storm | 17 | 1,200 | 600 |
| 26.12 | South Asia, East Africa | Earthquake, tsunami | >170,000* | >10,000 | >1,000 |

* More than 100,000 people are still missing.